



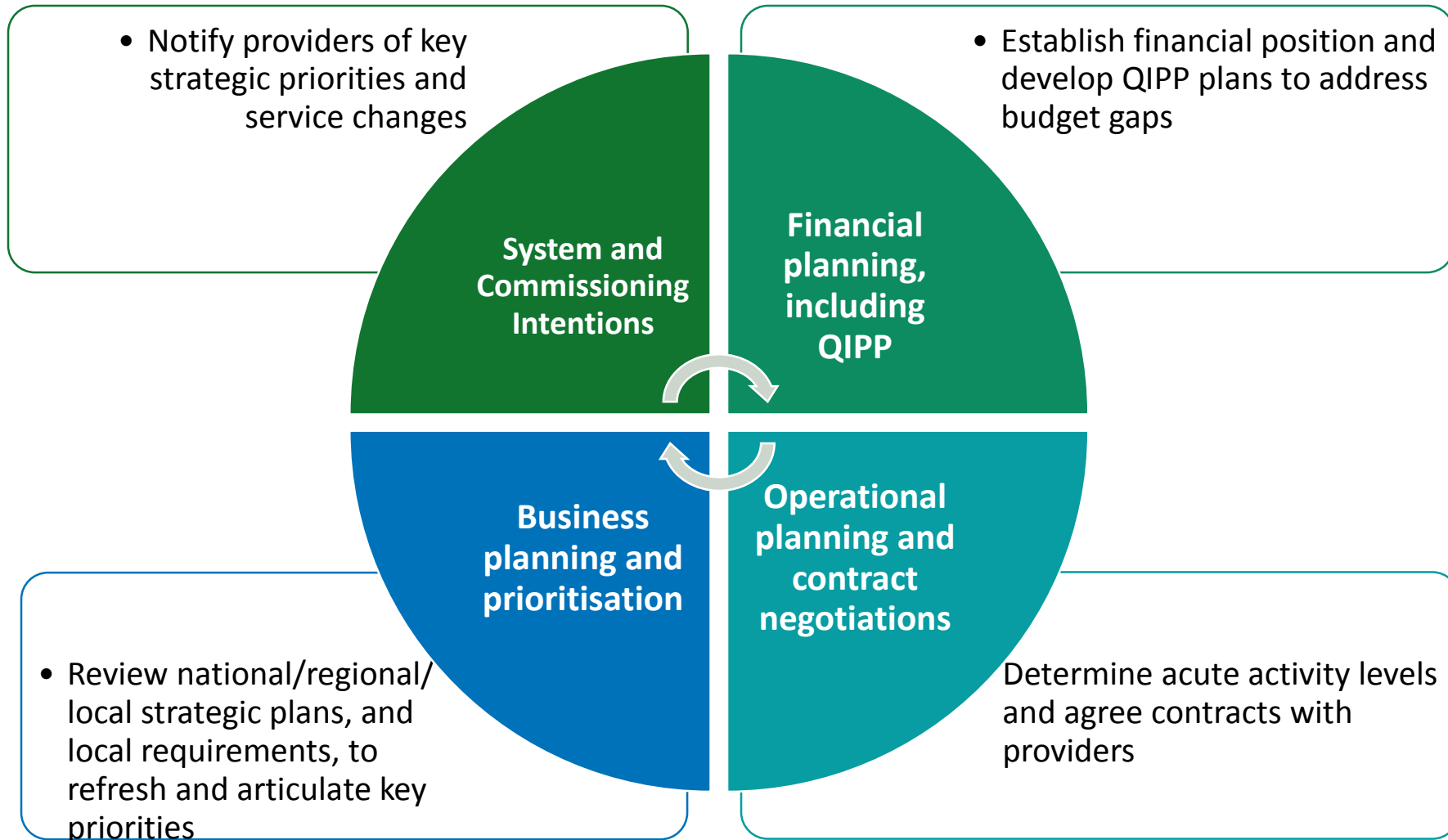
Camden
Clinical Commissioning Group

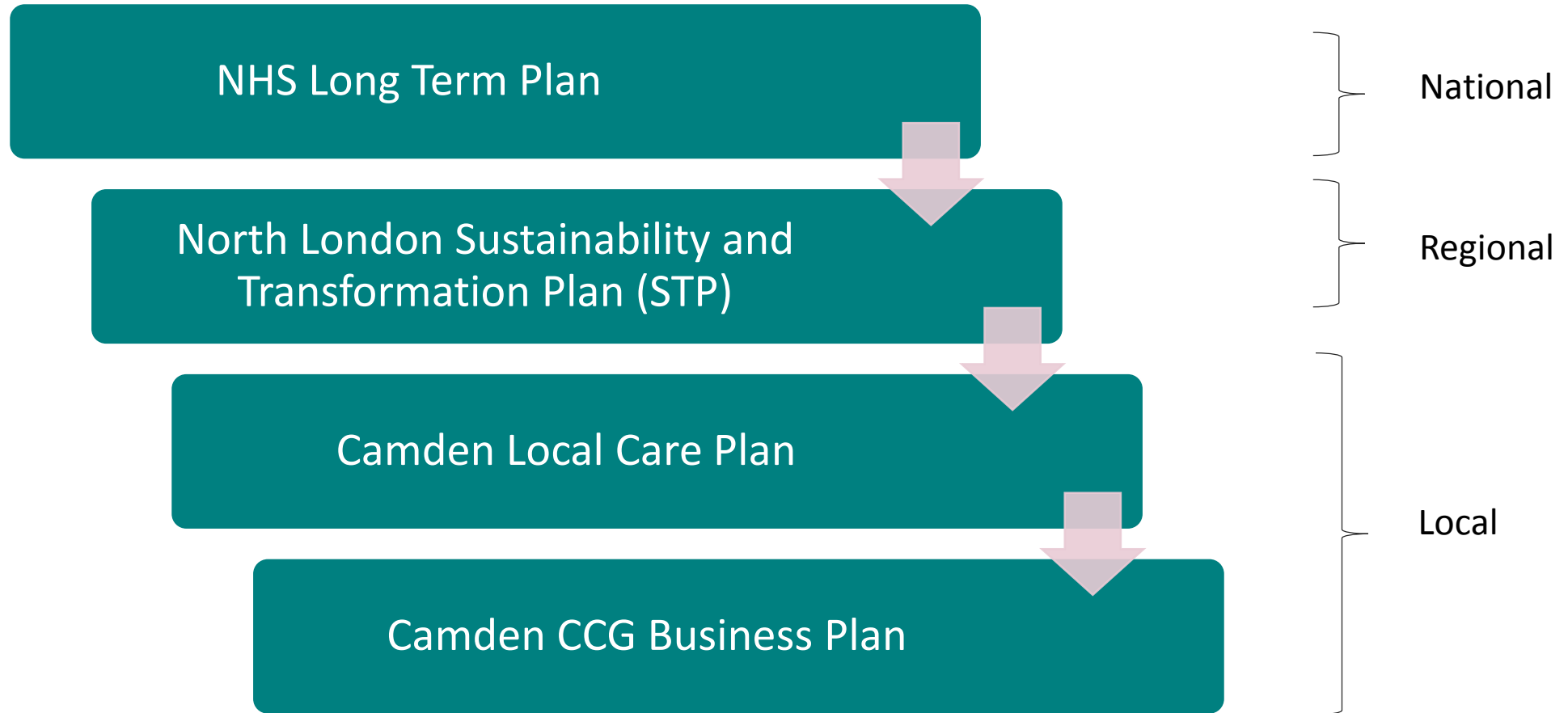
Business Planning and Priorities

Sally MacKinnon,
Director of Transformation, Planning & Delivery



Annual planning cycle





Long Term Plan – key themes

- Boosting out of hospital care
- Reducing pressure on emergency hospital services
- Co-creation, empowerment and personalised care
- Digitally enabled primary and outpatient care
- Population health and Integrated Care Systems

Focus on prevention and reducing health inequalities

Evidenced based action on reducing:

- Obesity
- Smoking
- Alcohol
- Air Pollution
- and preventing Diabetes

Improved support for:

- People with learning disabilities and autism
- Homeless
- People with mental illness to find employment
- Screening and early diagnosis of cancer



Progress on care quality and outcomes

- Builds on existing improvements in childbirth, cancer survival, reducing cardiovascular deaths, and lower male suicide rates.
- Build on the priorities set out in the Five Year Forward View for cancer, mental health (adults and children's), diabetes, multi-morbidity and healthy ageing including dementia
- Focus on children's health, maternity, cardiovascular and stroke, respiratory conditions, learning disabilities and autism, carers.



Key priorities for 2019/20

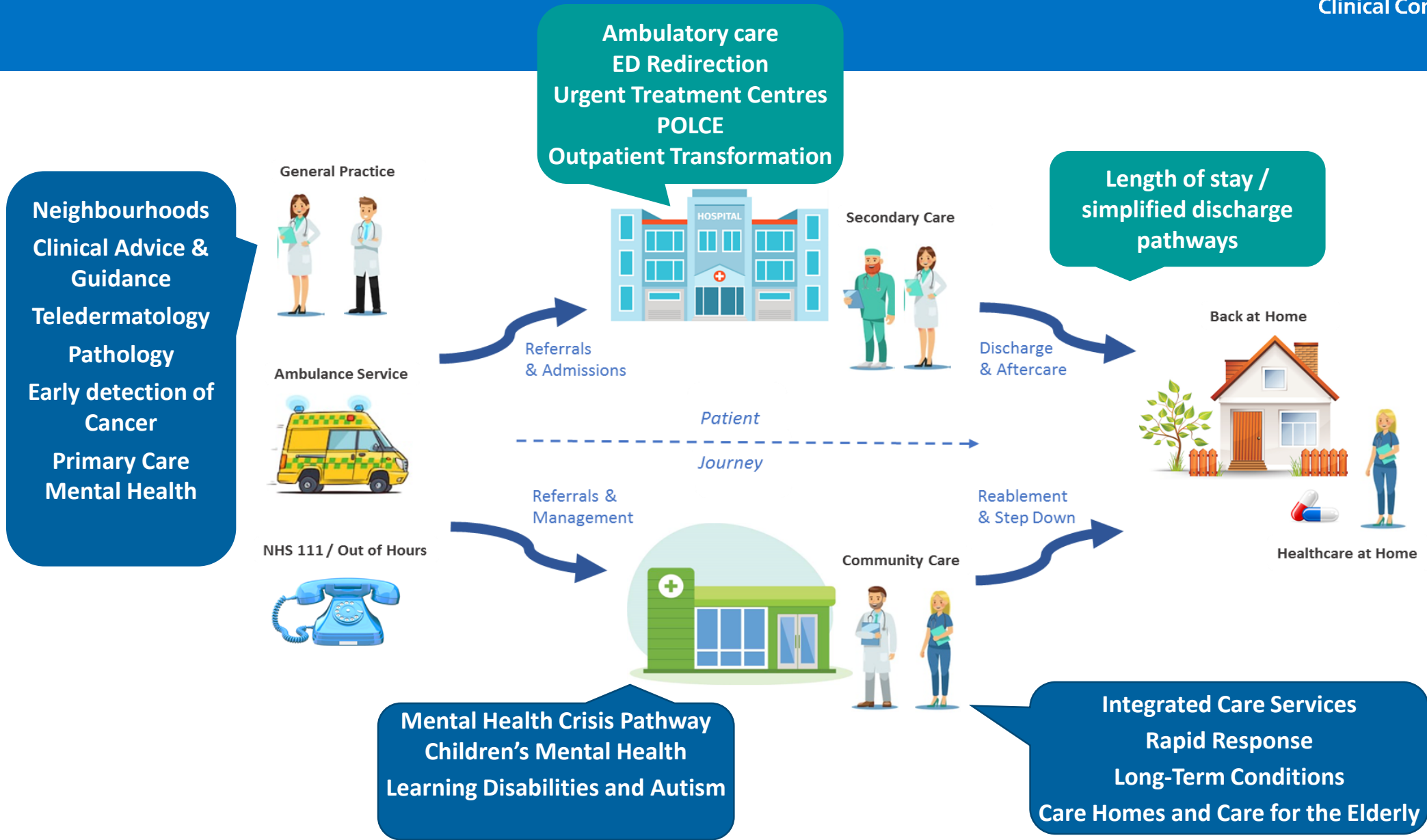
Local Care Priority	Priority initiatives
Flow in and out of hospital	Admissions Avoidance (Rapids) ED Demand Management Simplified Discharge POLCE
Enhancing Community Based Care	Outpatient transformation Long Term Conditions Strategy Clinical Advice and Guidance Planned care: Teledermatology / Gastroenterology / MSK Pathology Early Detection of Cancer Primary Care Neighbourhood development
Supporting People with Complex Needs	Integrated Care Delivery Care for the Elderly Pathway and Care Homes Integrated Falls Pathway Learning Disabilities and Autism Mental Health Crisis Pathway
Infrastructure Developments	Self-care and prevention Workforce Shared Digital Record

Majority of priorities continue from 2018/19, reflecting transformational nature

New priorities include:

- Early detection of Cancer
- Outpatient transformation
- Care for the Elderly Pathway and Care Homes

Priorities: system view



Service developments in 2018/19

More people seen by community Rapids team preventing admissions

Consultant advice & guidance strengthened for Primary Care to ensure appropriate referrals

Teledermatology pilot currently live

New care navigation and social prescribing service

Reductions in length of stay in hospital and improvements in discharge process

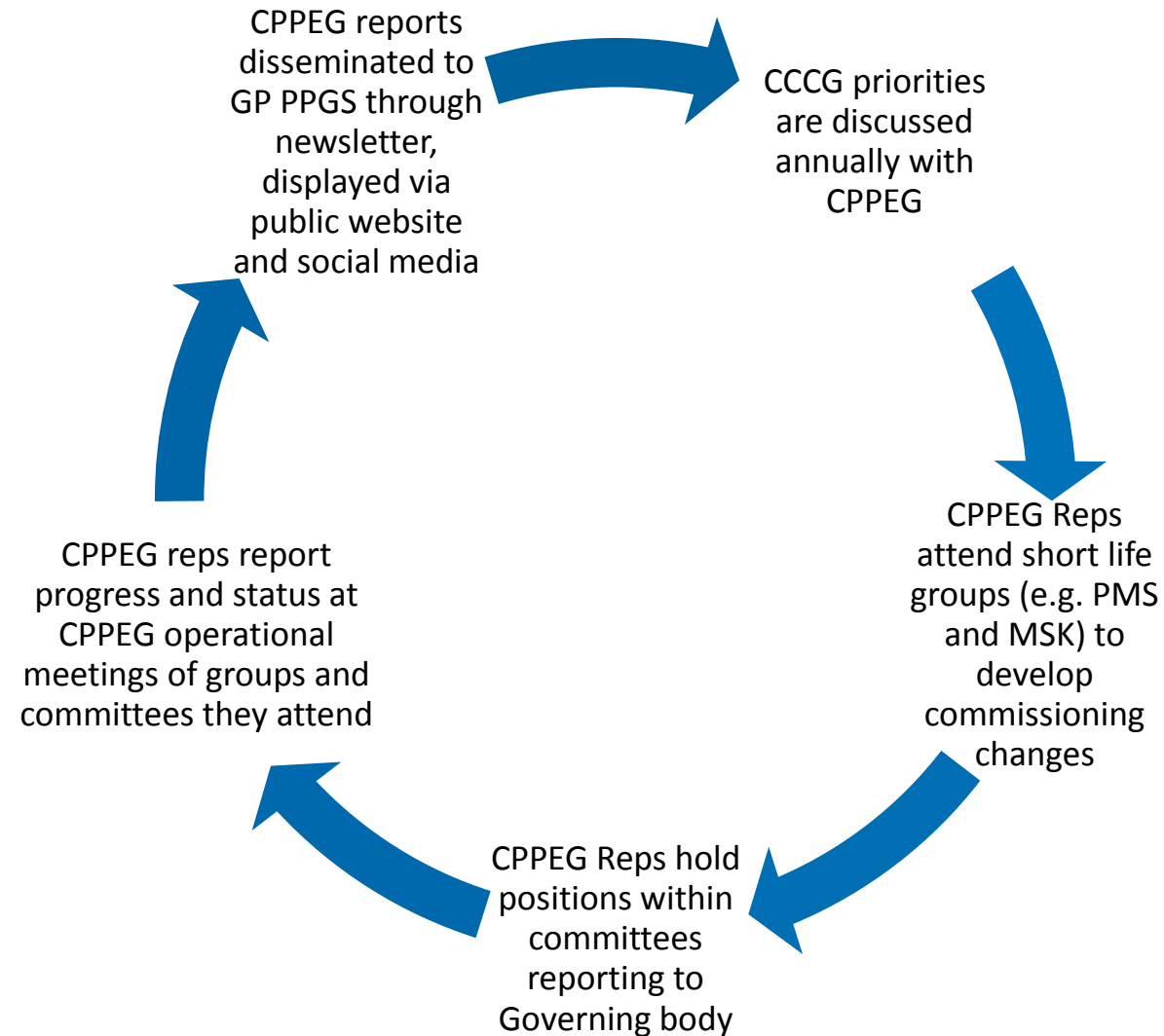
Good utilisation of Extended Access service

Integrated MSK service live

Model for integrated care teams developed

Children's Integrated Paediatric service being rolled out

Improvements in number of annual health checks for those with learning disabilities



Questions and discussion

- Which priorities do you think are particularly important?
- Are there priorities you would like to hear more about at future meetings?
- Any other views?

